

Contents

Saudi Market (TADAWUL).....	2
Boursa Kuwait.....	3
Abu Dhabi Exchange.....	4
Dubai Financial Market.....	5
Definitions	6
Contacts	7

Related Links

[QNBFS Home Page](#)

[QNBFS Trading Portal](#)

[QNBFS Research Page](#)

Saudi Market (TADAWUL)

TADAWUL ALL-SHARE INDEX - DAILY CHART



TASI Index

	Level	% Δ	Volume*
Last	6,813.67	(0.89)	176,552,697

*Volume of Index Constituents

Resistance/Support Levels

Levels	1st	2nd	3rd
Resistance	6,900	7,200	7,500
Support	6,500	6,000	5,900

Index Overview:

The Index reached the 50SMA, we may see weakness to unfold around here.

Banque Saudi Fransi - DAILY CHART



Stock's Vitals

	Last Px. (SAR)	% Δ	Volume
Last	28.50	(4.84)	1,289,795

Resistance/Support Levels

Levels	1st	2nd	3rd
Resistance	30.45	32.30	34.05
Support	28.00	26.40	25.45

Stock Overview:

The price has created a bearish reversal candlestick and a double-top formation (on the intraday chart; now shown here). As a result, we expect the price to decline.

- **Expected Target Price: 26.40 – 25.45**
- **SELL Trigger: a price breach below 28.00**
- **Suggested Stop-Loss Price: Discretionary**

Boursa Kuwait

KWSE PREMIER MARKET - DAILY CHART



KSE Index

	Level	% Δ	Volume*
Last	5,144.42	(1.76)	103,572,824

*Volume of Index Constituents

Resistance/Support Levels

Levels	1 st	2 nd	3 rd
Resistance	5,200	5,500	5,800
Support	5,000	4,800	4,600

Index Overview:

The Index has created a bullish flag formation, suggesting the uptick could continue against the downtrend in the short term.

Qurain Petrochemical Ind.- DAILY CHART



Stock's Vitals

	Last Px. (KWd)	% Δ	Volume
Last	205.00	0.99	291,142

Resistance/Support Levels

Levels	1 st	2 nd	3 rd
Resistance	205.00	213.00	230.00
Support	191.00	187.00	163.00

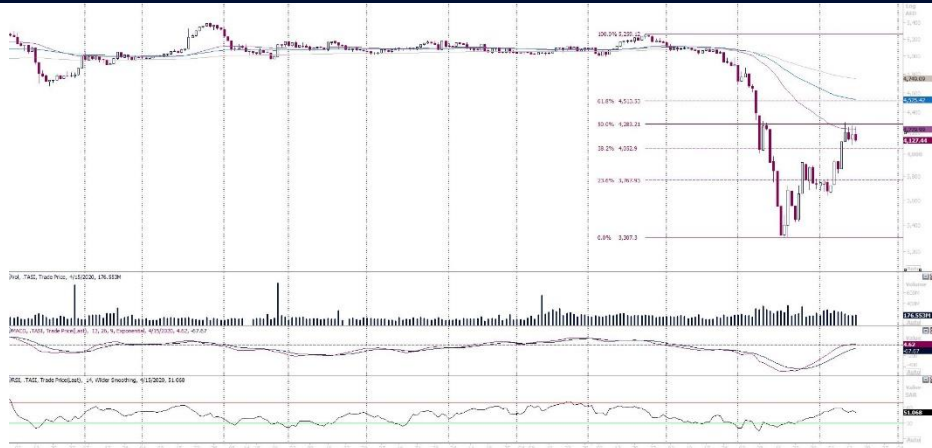
Stock Overview:

The price remains below its moving averages, suggesting the trend remains down. However, we expect the recent relief rally to continue when the price clears above last March's highest price reached.

- **Expected Target Price: 213.00 - 230.00**
- **BUY Trigger: a price breakout above 205.00**
- **Suggested Stop-Loss Price: Discretionary**

Abu Dhabi Exchange

ADX GENERAL INDEX - DAILY CHART



ADX Index

	Level	% Δ	Volume*
Last	4,127.44	(1.23)	33,086,316

*Volume of Index Constituents

Resistance/Support Levels

Levels	1st	2nd	3rd
Resistance	4,200	4,500	4,800
Support	4,000	3,750	3,500

Index Overview:

The Index reached the 50SMA, we may see weakness to unfold around here.

RAK Properties - DAILY CHART



Stock's Vitals

	Last Px. (AED)	% Δ	Volume
Last	0.347	(1.70)	1,867,003

Resistance/Support Levels

Levels	1st	2nd	3rd
Resistance	0.365	0.373	0.396
Support	0.347	0.333	0.320

Stock Overview:

The price has created a flag formation; it is a bearish continuation pattern. Expect weakness on the name.

- **Expected Target Price: 0.333 – 0.320**
- **SELL Trigger: a price breach below 0.347**
- **Suggested Stop-Loss Price: Discretionary**

Dubai Financial Market

DFM GENERAL INDEX – DAILY CHART



DFMGI Index

	Level	% Δ	Volume*
Last	1,896.91	(2.21)	441,713,663

*Volume of Index Constituents

Resistance/Support Levels

Levels	1 st	2 nd	3 rd
Resistance	1,900	2,000	2,100
Support	1,800	1,700	1,600

Index Overview:

The trend remains down, and the Index reached multi-year levels. However, indicators show extreme levels have been reached.

Dubai Investments – DAILY CHART



Stock's Vitals

	Last Px. (AED)	% Δ	Volume
Last	1.120	(2.61)	4,629,889

Resistance/Support Levels

Levels	1 st	2 nd	3 rd
Resistance	1.17	1.24	1.29
Support	1.12	1.07	0.98

Stock Overview:

The price has created a bearish continuation pennant price formation. We expect the price to decline further.

- **Expected Target Price: 1.07 – 0.98**
- **SELL Trigger: a price breach below 1.12**
- **Suggested Stop-Loss Price: Discretionary**

Definitions

Candlestick: A chart that displays the high, low, opening and closing prices for a security in a single period. The body of the candle is made up by the opening and the closing prices, i.e., the taller the body the greater the range between these two prices and vice versa. A colored candle denotes a closing price that is lower than the opening price, while a white candle shows the opposite. The candlestick's shadows or wicks show the period's high and low prices and how they compare to the opening and closing price. In general, the shape of the candle will vary upon the positions of the period's high, low, opening and closing prices.

Support: A level that could cause more buyers to step in in order to prevent the security from falling or causing the security price to head higher.

Resistance: An inverse of a support level. A resistance area or level could cause more sellers to step in in order to prevent the security from rising or causing the security price to head lower.

SMA (Simple Moving Average): Is an arithmetic average, which calculates the average price of a security over a defined number of periods and is thus considered a lagging indicator. SMAs used in our analysis refer to closing prices. In general, SMAs serve many purposes, such as a smoothing tool, an indicative price direction and potential support/resistance levels.

Market Breadth: Breadth indicates the number of securities that have closed higher vs. the number of decliners in a particular exchange.

MACD (Moving Average Convergence/Divergence): Is a trading indicator, which shows changes in the strength, direction, momentum and duration of a trend in a stock's price through a collection of three-time series calculated from historical closing price data.

RSI (Relative Strength Index): Is a momentum indicator that compares a security's price gains to its losses for a predetermined number of periods (we generally use 14 periods). The RSI attempts to point out how a security, in relative terms, is in the overbought/oversold zone. Securities with a RSI above 70 could be considered as overbought, and below 30 could be considered as oversold.

Pattern/Formation: Is a graphical presentation of a security's price activity over a certain period of time. Formations come in different shapes (such as, head & shoulders, triangles, flags, and so on). They can be used to identify potential trends, reversal of trends, price targets, entry and exit points, etc.

Fibonacci Retracements: Are horizontal lines that indicate expected areas of support/resistance for a security based on a predetermined price movement. These levels are usually indicated by Fibonacci ratios of 23.6%, 38.2%, 50.0%, 61.8% and 100% from that particular movement.

Fibonacci Pivot and Intraday Support/Resistance: A Pivot Point is generally used to formulate expected future support/resistance levels. From the base Pivot Point, Fibonacci multiples of the high-low differential are added to form resistance levels and subtracted to form support levels.

Contacts

Zaid al-Nafoosi, CMT, CFTe
Senior Research Analyst
Tel: (+974) 4476 6535
zaid.alnafoosi@qnbfs.com.qa

Shahan Keushgerian
Senior Research Analyst
Tel: (+974) 4476 6509
shahan.keushgerian@qnbfs.com.qa

Mehmet Aksoy, PhD
Senior Research Analyst
Tel: (+974) 4476 6589
mehmet.aksoy@qnbfs.com.qa

Saugata Sarkar, CFA, CAIA
Head of Research
Tel: (+974) 4476 6534
saugata.sarkar@qnbfs.com.qa

Ahmed El-Khudary
Head of Trading
Tel: (+974) 4476 6533
ahmed.elkhudary@qnbfs.com.qa

Feras al-Sarraj
Head of Sales
Tel: (+974) 4476 6514
feras.alsarraj@qnbfs.com.qa

QNB Financial Services
Contact Center: (+974) 4476 6666
PO Box 24025
Doha, Qatar

Sources: Bloomberg, QNBFS Research

Disclaimer and Copyright Notice: This publication has been prepared by QNB Financial Services Co. W.L.L. ("QNBFS") a wholly-owned subsidiary of Qatar National Bank (Q.P.S.C.) ("QNB"). QNBFS is regulated by the Qatar Financial Markets Authority and the Qatar Exchange QNB SAQ is regulated by the Qatar Central Bank. This publication expresses the views and opinions of QNBFS at a given time only. It is not an offer, promotion or recommendation to buy or sell securities or other investments, nor is it intended to constitute legal, tax, accounting, or financial advice. QNBFS accepts no liability whatsoever for any direct or indirect losses arising from use of this report. Any investment decision should depend on the individual circumstances of the investor and be based on specifically engaged investment advice. We therefore strongly advise potential investors to seek independent professional advice before making any investment decision. Although the information in this report has been obtained from sources that QNBFS believes to be reliable, we have not independently verified such information and it may not be accurate or complete. QNBFS does not make any representations or warranties as to the accuracy and completeness of the information it may contain, and declines any liability in that respect. For reports dealing with Technical Analysis, expressed opinions and/or recommendations may be different or contrary to the opinions/recommendations of QNBFS Fundamental Research as a result of depending solely on the historical technical data (price and volume). QNBFS reserves the right to amend the views and opinions expressed in this publication at any time. It may also express viewpoints or make investment decisions that differ significantly from, or even contradict, the views and opinions included in this report. This report may not be reproduced in whole or in part without permission from QNBFS.